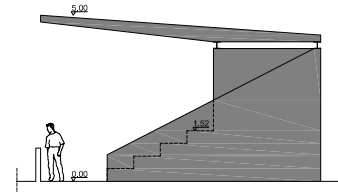
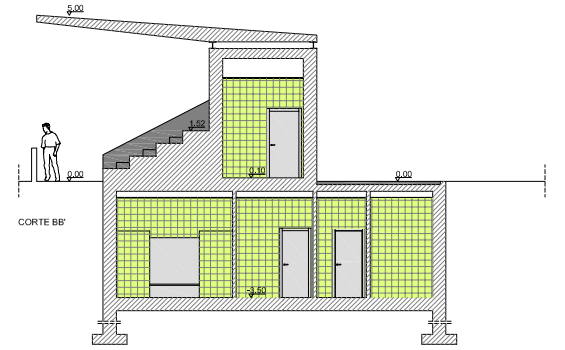


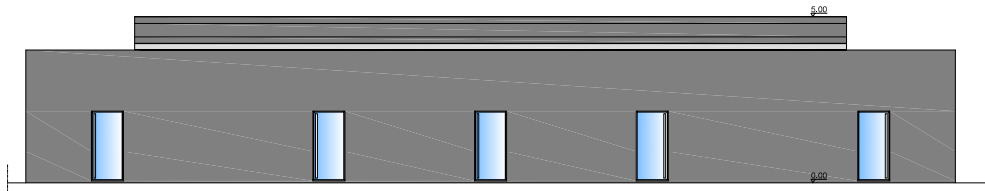
ALÇADO SUDOESTE



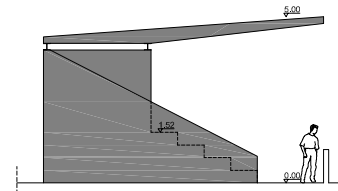
ALÇADO SUDESTE



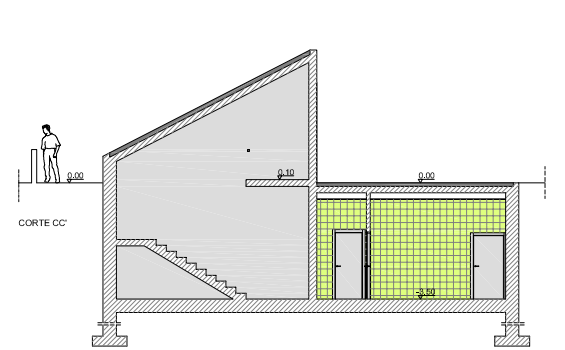
CORTE BB'



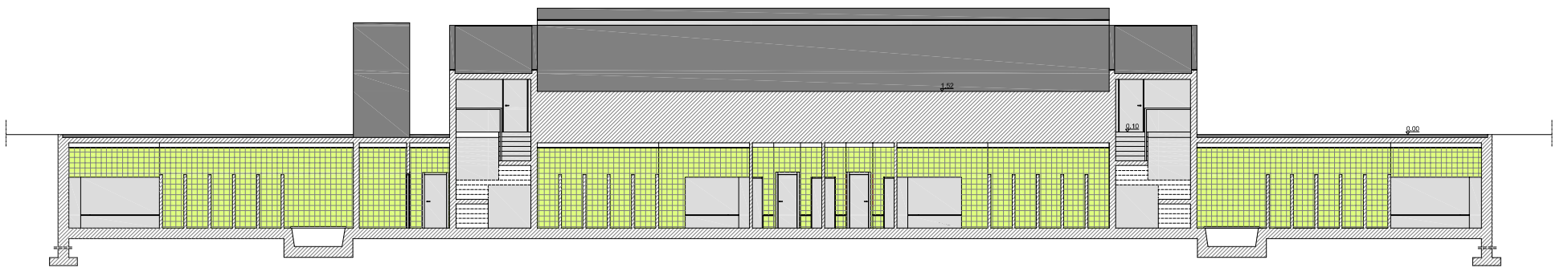
ALÇADO NORDESTE



ALÇADO NOROESTE



CORTE CC'



CORTE AA'

LEGENDA:

- BETÃO
- XISTO
- CHAPA
- VIDRO
- TILOLOMISTO
- MOSAICO CERÁMICO
- CUBO DE GRANITO 0.15X0.15

COTA DO EXISTENTE 146.00 - COTA DO PROJECTO 0.00